



SW 49th Avenue - North Phase

Neighborhood Meeting

Date: July 28, 2021

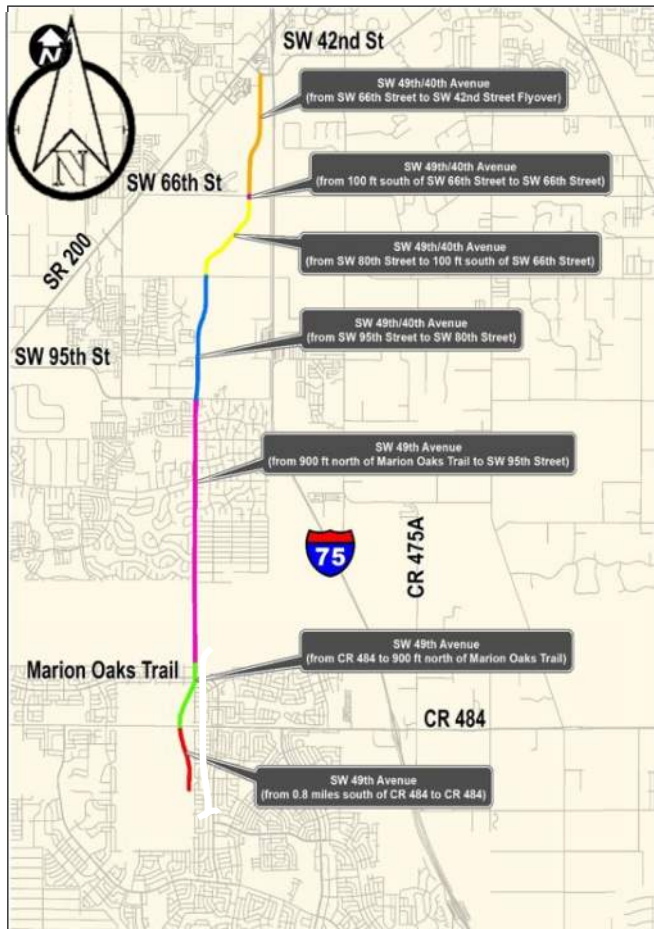
GPI

Engineering | Design | Planning | Construction Management



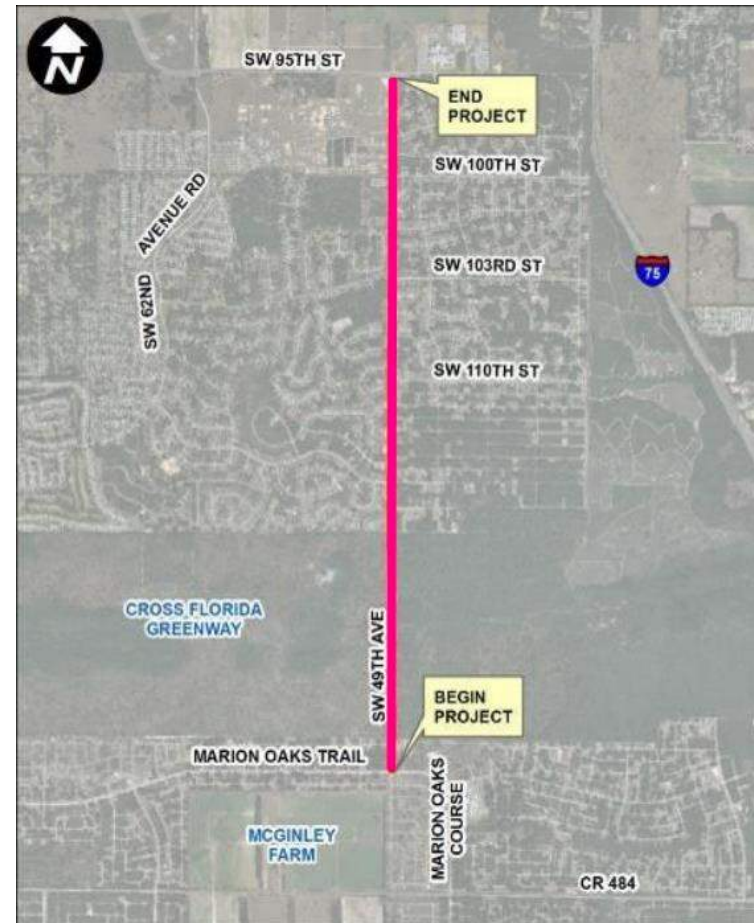
Marion
County
FLORIDA

Project Location



SW 49th Ave Corridor

SW 49th Avenue North Phase



Preliminary Engineering Report Process

SW 49th Avenue
North Phase



The goal:

To prepare an environmental and engineering study of alternative typical sections to accommodate the future needs of the motorists, pedestrians and bicyclists along the SW 49th Avenue Corridor.

- Planning
- **Preliminary Engineering Report (PER)**
- Design
- Right of Way (ROW) Acquisition
- Construction
- Maintenance of Facility

PER Study Elements

- Data Collection – Collect data and information
- Preliminary Engineering – Develop alternatives and determine impacts to ROW, utilities and evaluation of cost.
- Environmental – Assess and evaluate all social, cultural, natural and physical resources, and determine the impacts and mitigation requirements.
- Long Range Planning: Consistent with Ocala/Marion County TPO's Long Range Transportation Plan.

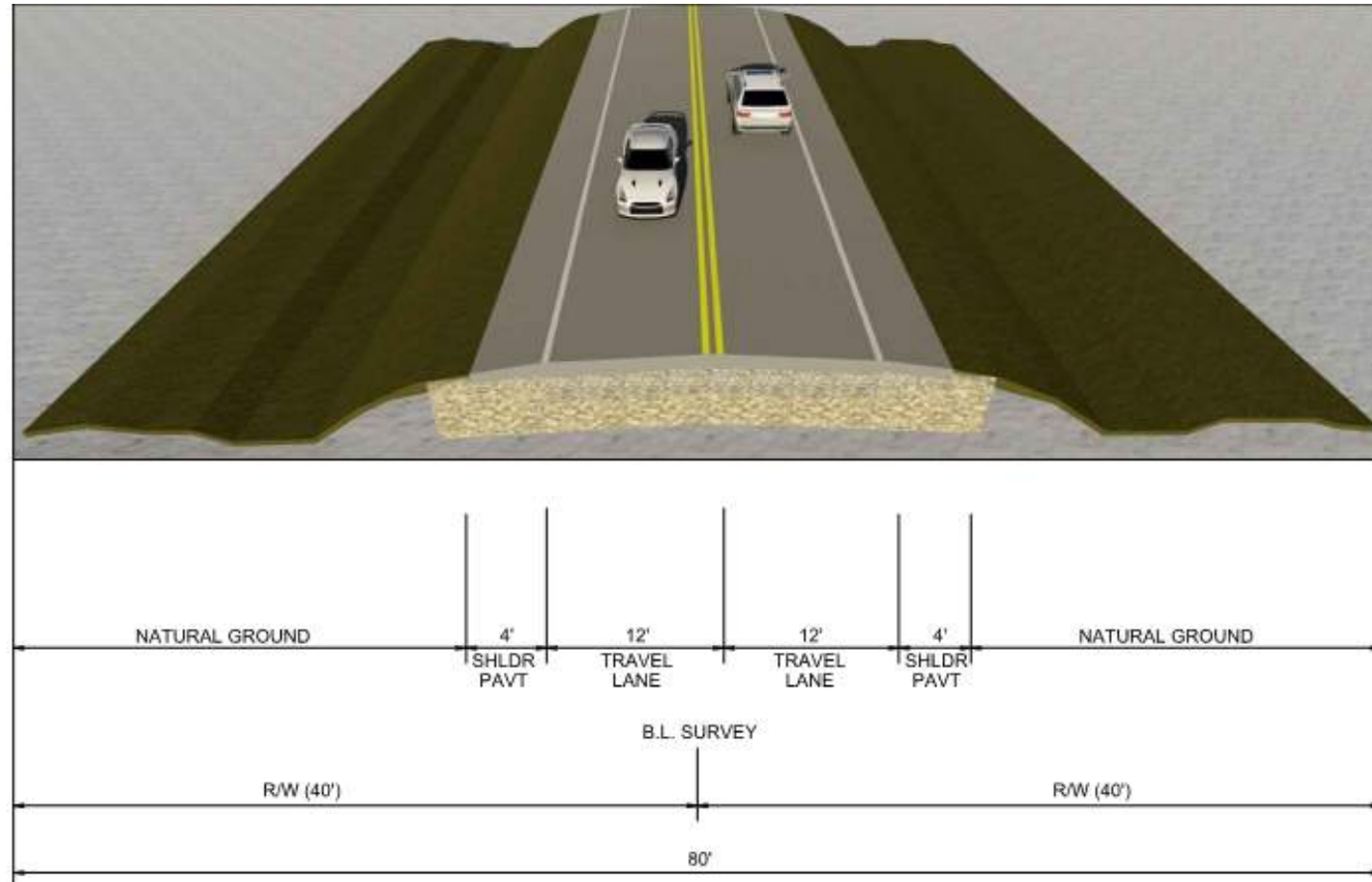
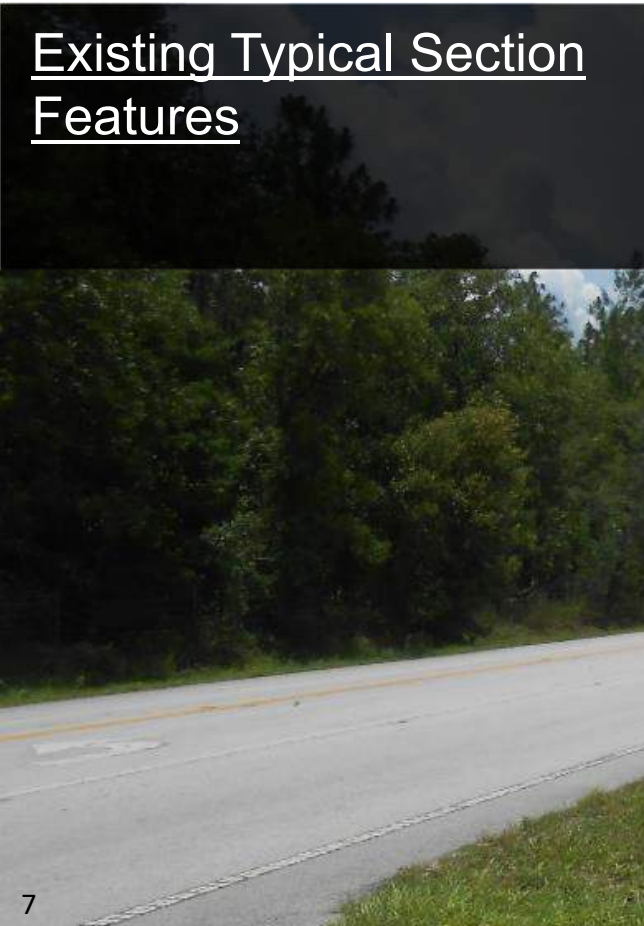
PER Study Elements

- Safety Impacts – Evaluation of existing facility and within the development of proposed typical section. Safety Features for all users (Pedestrians, Bicyclists and Motorists).
- Agency Coordination – Meet with agency staff to gather technical input regarding proposed roadway improvements.
- Public Involvement – Seek out affected property owners, interested individuals and stakeholders to secure their input.

Existing Roadway Features



Existing Typical Section Features



Project Purpose & Need

SW 49th Avenue
North Phase

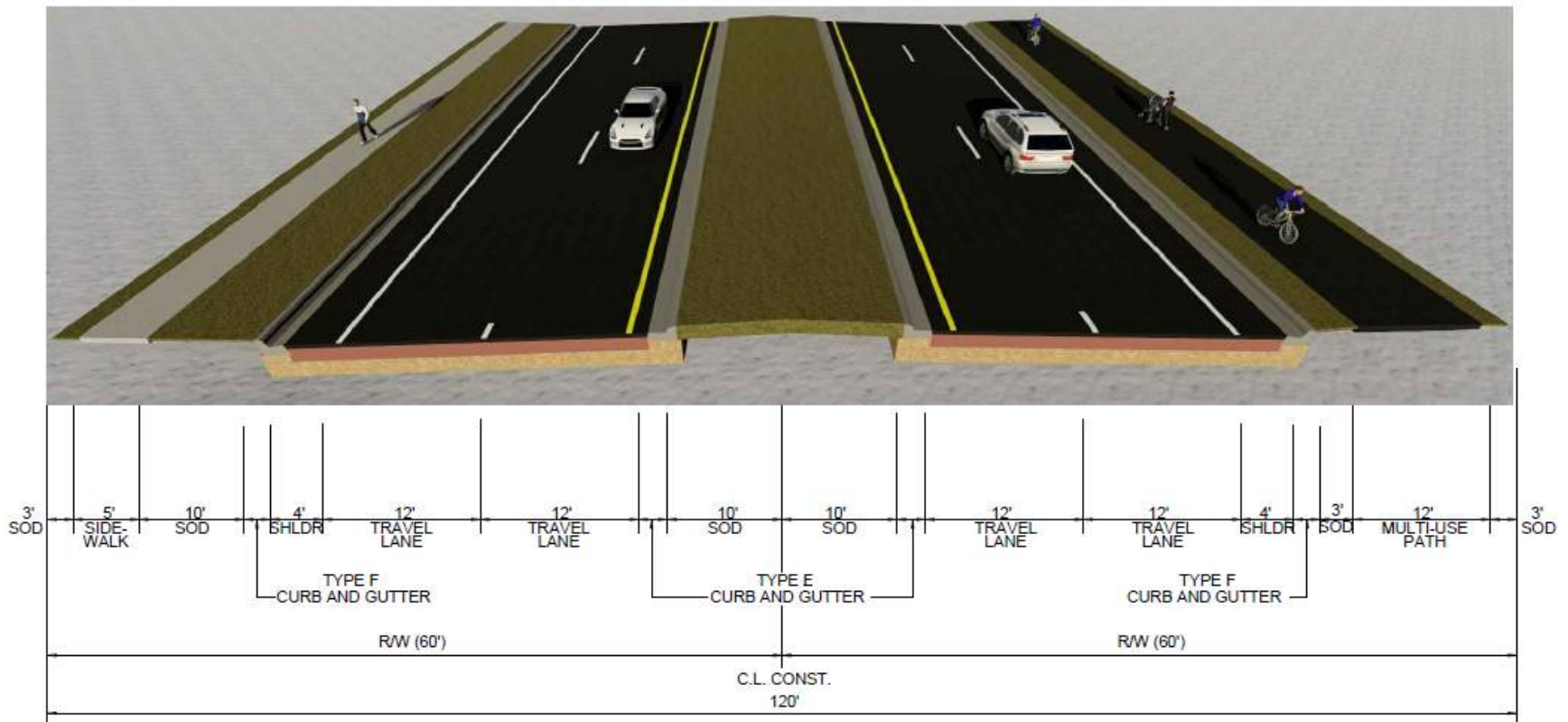


- Increase Capacity for Motorists
- Projected Traffic Volumes
 - Opening Year Daily Traffic: 15,200 to 15,800 AADT
 - Design Year Daily Traffic: 25,400 to 30,700 AADT
 - Existing Posted Speed = 30 - 45 mph
 - Future Design Speed = 45 mph
- Improved Safety and Mobility
- Provide Pedestrian and Bicycle Facilities
- Augment the North-South Corridor West of I-75
- Provide Public Workshop



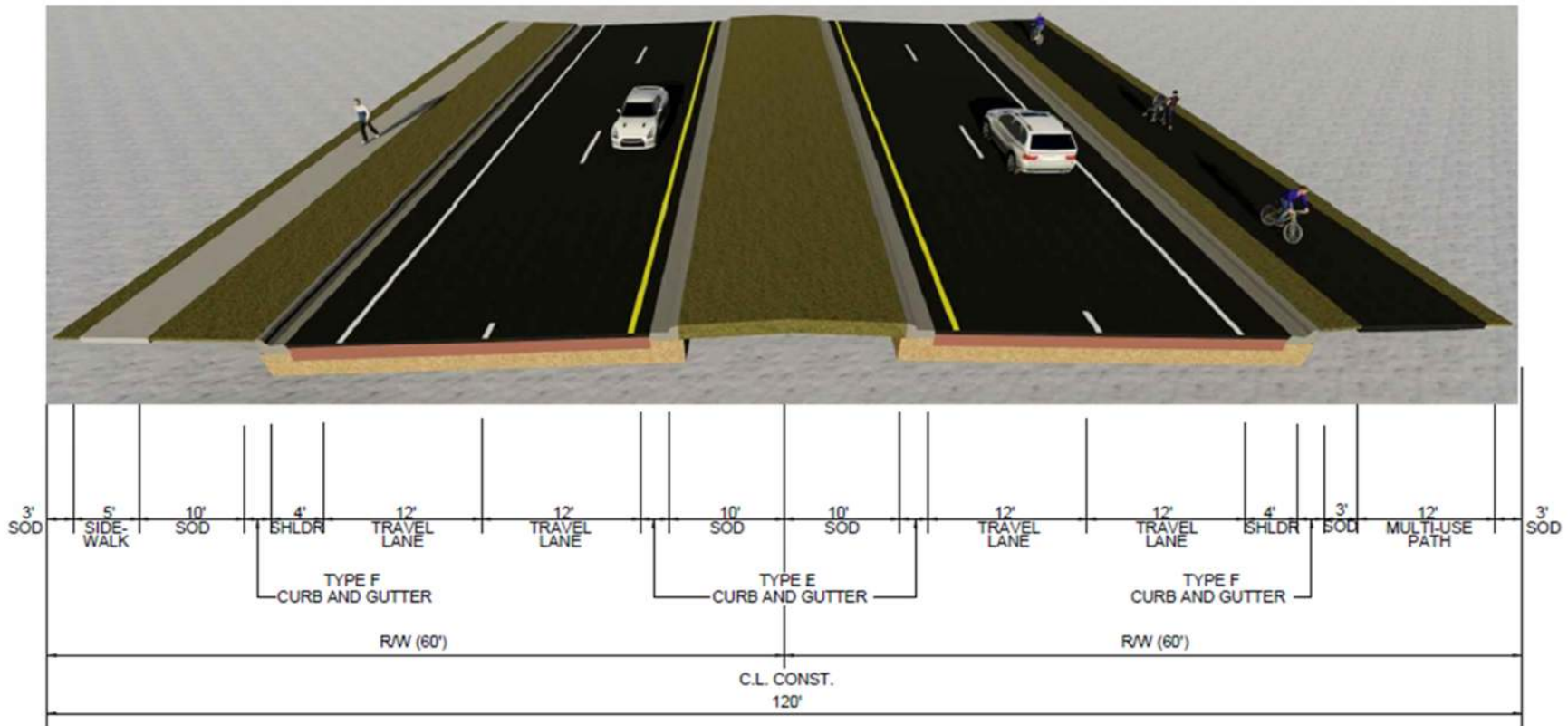
Build Typical Section A - Existing Alignment

SW 49th Avenue
North Phase



Build Typical Section B - Roadway Realignment (shift to the east)

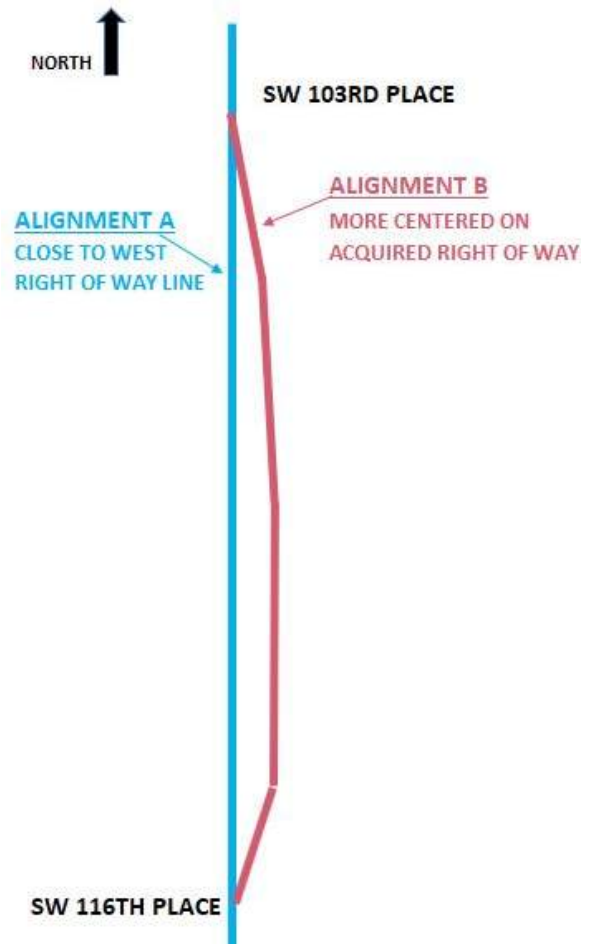
SW 49th Avenue
North Phase



Alignment Alternatives



SW 49th Avenue North Phase





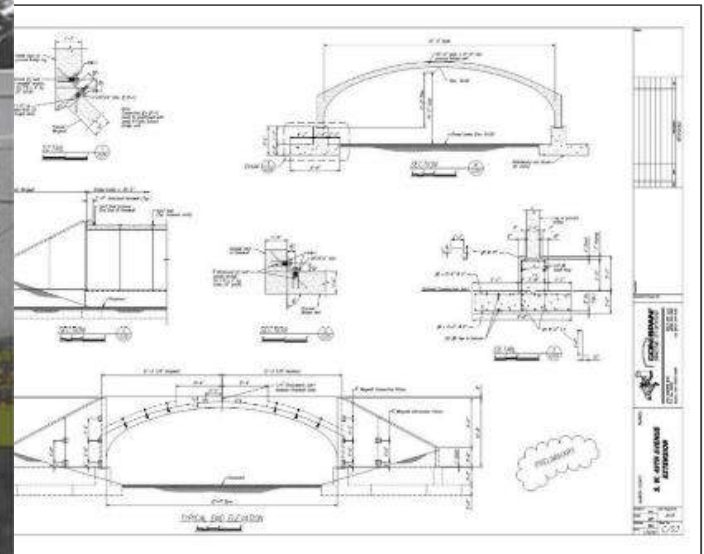
Proposed Prefabricated Bridge Section

SW 49th Avenue
North Phase



Potential Wildlife Corridor For Cross Florida Greenways

SW 49th Avenue
North Phase



Potential DRA Locations

SW 49th Avenue
North Phase



Preliminary Engineering Pond Siting Report

Eight (8) Potential DRA (Drainage Retention Area) Locations

Typically Adjacent to Existing DRAs

Public Involvement Process

SW 49th Avenue
North Phase



1. Goals and Objectives
 - Engagement, participation, communicate, informational
2. Key Stakeholder Groups
 - Residents, businesses, agencies and interest groups
3. Outreach and Communications
 - Notices, social media, traditional media, speakers and meetings
 - Notifications will be sent to owners within 300-ft of Potential Construction (includes Ponds)
4. Public Input
 - Document input and address all comments/feedback in detail
5. Activities
 - Focus on direct participation from stakeholders.
 - Interactive meetings to promote value added discussion

Public Involvement

STEPS:

- Website/Newspaper Ad
- Advance notice
- Comment Cards
- Presentation
- Open House with Boards
- Included in PER Appendix

How can **SW 49th Ave North Phase** be improved to better serve our **travel needs and aspirations** for all Users.



Join us to share your Ideas!

COMMUNITY WORKSHOP

SW 49th Ave North Phase



WHEN ▶ July 28, 2021

WHERE ▶ Liberty Middle School

SW 49th Avenue
North Phase



Project Tasks & Public Involvement

SW 49th Avenue
North Phase



<u>Task</u>	<u>Timeline</u>
BCC Workshop	June 22, 2021
Neighborhood Meeting	July 28, 2021
Preliminary Engineering Report (PER) - Final	Fall, 2021
Design Phase	2022
Right-of-Way Phase	2023
Construction	2024 (approx. 12 - 15 months)

Public Involvement - Feedback

SW 49th Avenue
North Phase



Please provide your Feedback:

Complete a comment Card and place in the comment box, email or mail by August 18, 2021.

Review the Display boards, Project Team members are available to discuss individual comments.

Contact Information:

Caitlyn Hemmes, PE

Consultant Project Manager

Greenman-Pedersen, Inc.

(850) 297-2937

chemmes@gpinet.com

Mailing Address For Public Comments:

Greenman-Pedersen, Inc.

Attn: Caitlyn Hemmes, 49th Ave PER

3051 E. Livingston Street, Suite 300

Orlando, FL 32803

SW49thPER@gpinet.com



Thank you.

GPI

Engineering | Design | Planning | Construction Management



Marion
County
FLORIDA