



SW/NW 80th/70th Avenue Preliminary Engineering Report



Marion County Board of County Commissioners
Public Meetings – July 14th, 2021 & July 15th, 2021

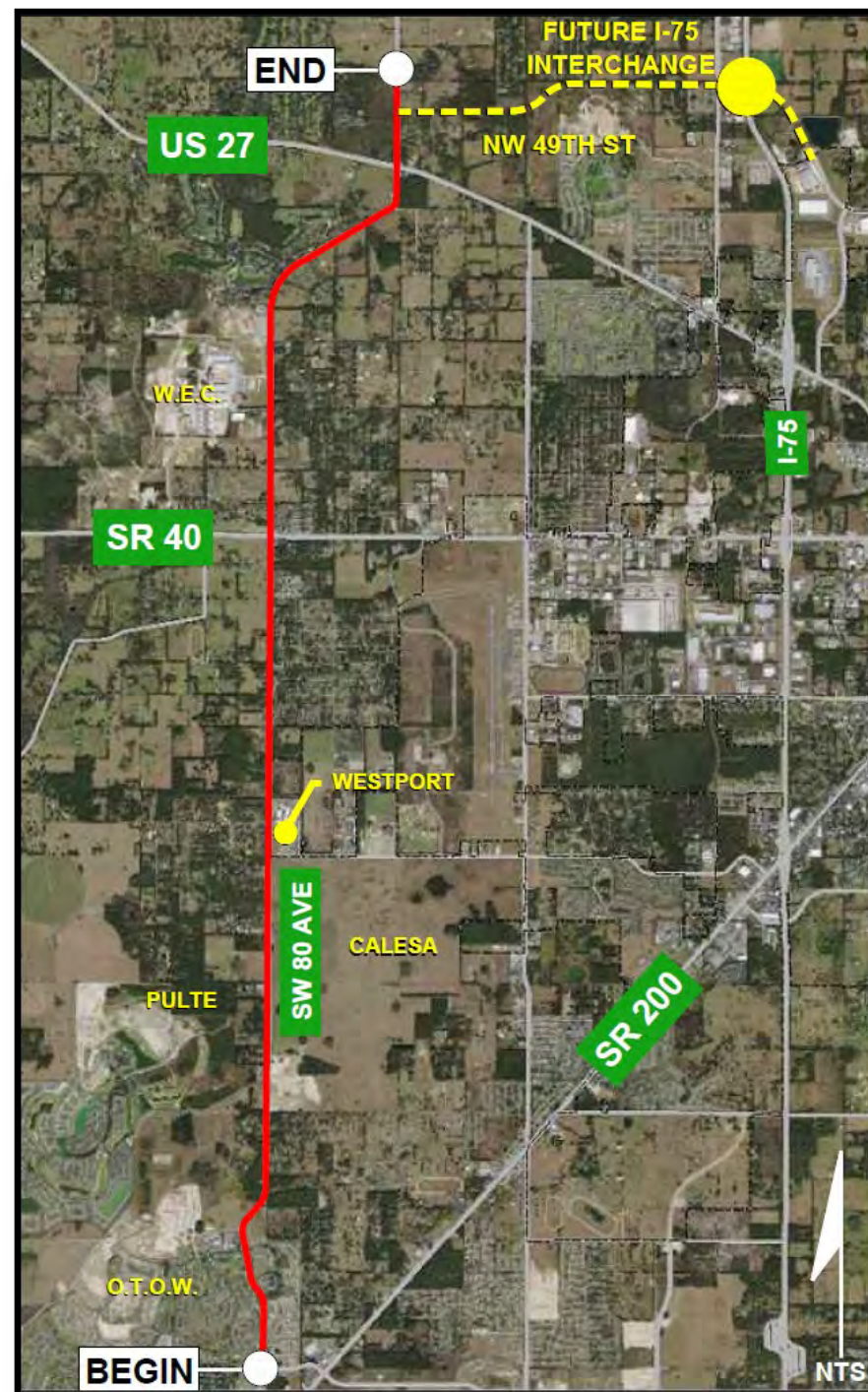
AGENDA

1. Introduction
2. Preliminary Design
3. Alternate Alignments
4. Typical Roadway Sections
5. Drainage Retention Areas
6. Timeline
7. Question and Answer

INTRODUCTION

Location & Description

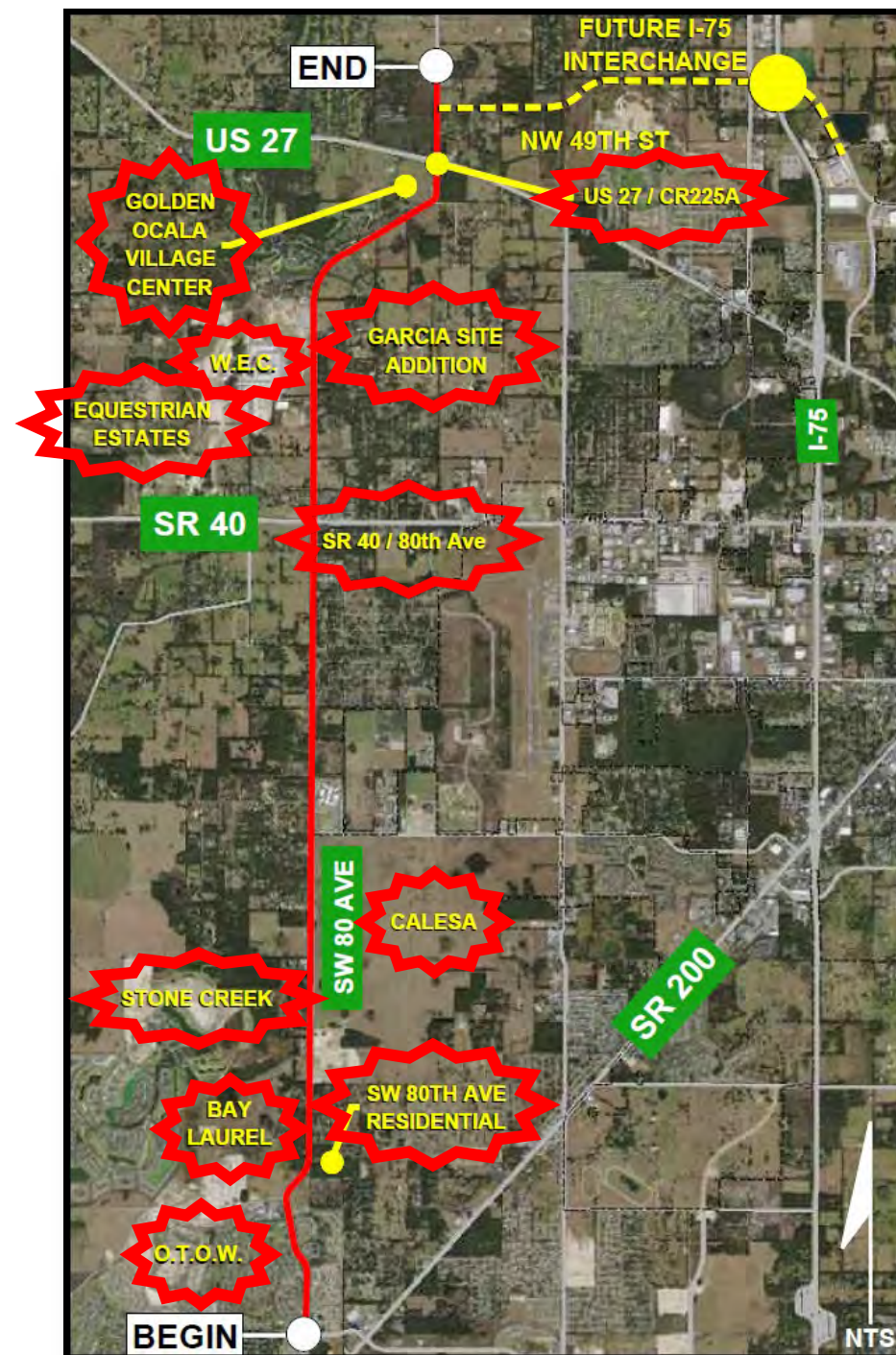
1. Major Westerly N/S Corridor
2. SW 90TH ST – 0.5-mile N of US 27
3. +10.5 Miles
4. Active Development
5. Future Connectivity
6. Phased Design/Construction



INTRODUCTION

Location & Description

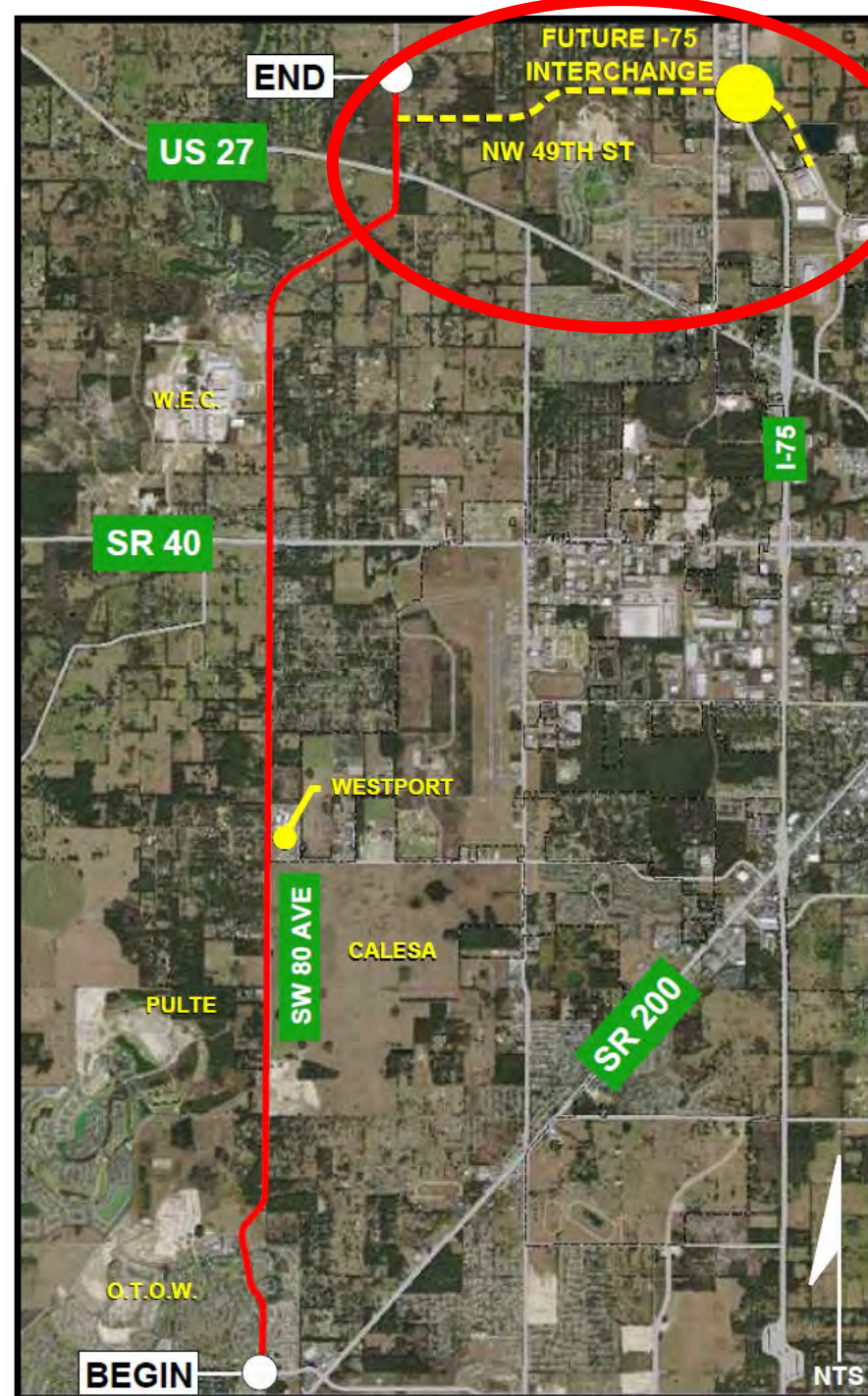
1. Major Westerly N/S Corridor
2. SW 90TH ST – 0.5-mile N of US 27
3. +10.5 Miles
4. Active Development
5. Future Connectivity
6. Phased Design/Construction



INTRODUCTION

Location & Description

1. Major Westerly N/S Corridor
2. SW 90TH ST – 0.5-mile N of US 27
3. +10.5 Miles
4. Active Development
5. Future Connectivity
6. Phased Design/Construction



INTRODUCTION

Location & Description

1. Major Westerly N/S Corridor
2. SW 90TH ST – 0.5-mile N of US 27
3. +10.5 Miles
4. Active Development
5. Future Connectivity
6. Phased Design/Construction



INTRODUCTION

Purpose and Need – Why?

Growth & Development

- Population Increase
- OTOW, Pulte, WEC, Future Potential

Need for Additional Capacity

- 14,600 to 37,500 AADT

Need to Improve Safety & Traffic Flow

- Access Management & Design

Transportation Planning (TIP/TPO)

- Identified



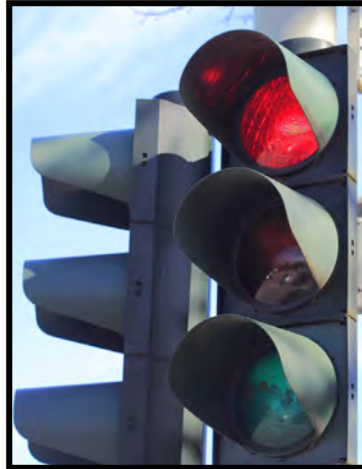
AGENDA

1. Introduction
2. Preliminary Design
3. Alternate Alignments
4. Typical Roadway Sections
5. Drainage Retention Areas
6. Timeline
7. Question and Answer

PRELIMINARY DESIGN

Preliminary Engineering Report – Study

1. Engineering
2. Environmental
3. Archaeological
4. Public Involvement
5. Conceptual Plans



PRELIMINARY DESIGN

Preliminary Engineering Report – Study

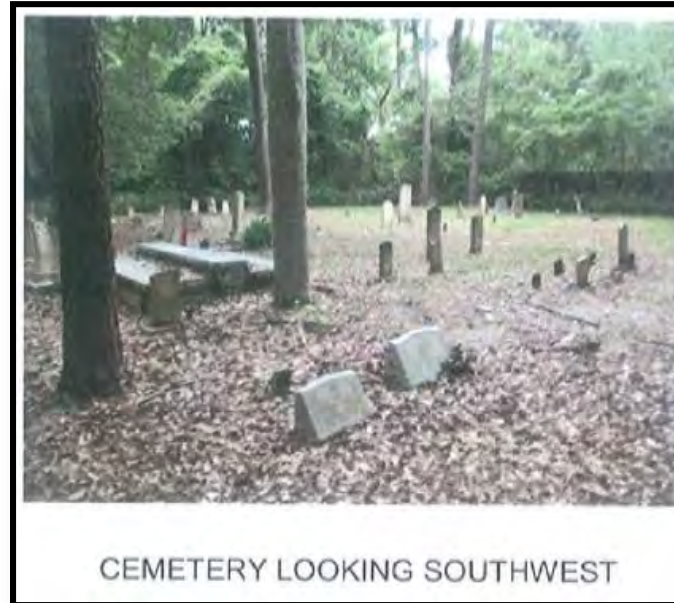
1. Engineering
2. Environmental
3. Archaeological
4. Public Involvement
5. Conceptual Plans



PRELIMINARY DESIGN

Preliminary Engineering Report – Study

1. Engineering
2. Environmental
3. Archaeological
4. Public Involvement
5. Conceptual Plans



PRELIMINARY DESIGN

Preliminary Engineering Report – Study

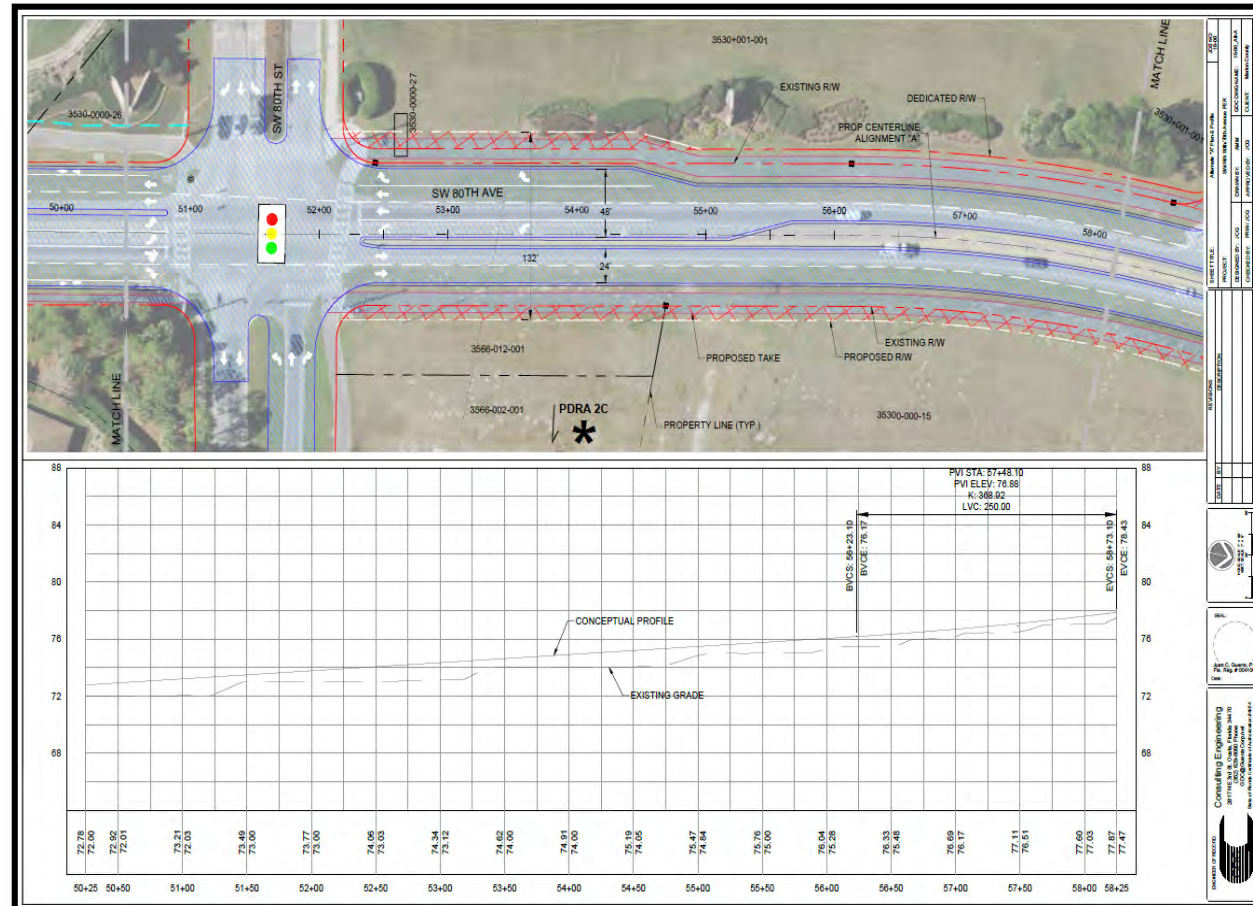
1. Engineering
2. Environmental
3. Archaeological
4. Public Involvement
5. Conceptual Plans



PRELIMINARY DESIGN

Preliminary Engineering Report – Study

1. Engineering
2. Environmental
3. Archaeological
4. Public Involvement
5. Conceptual Plans



AGENDA

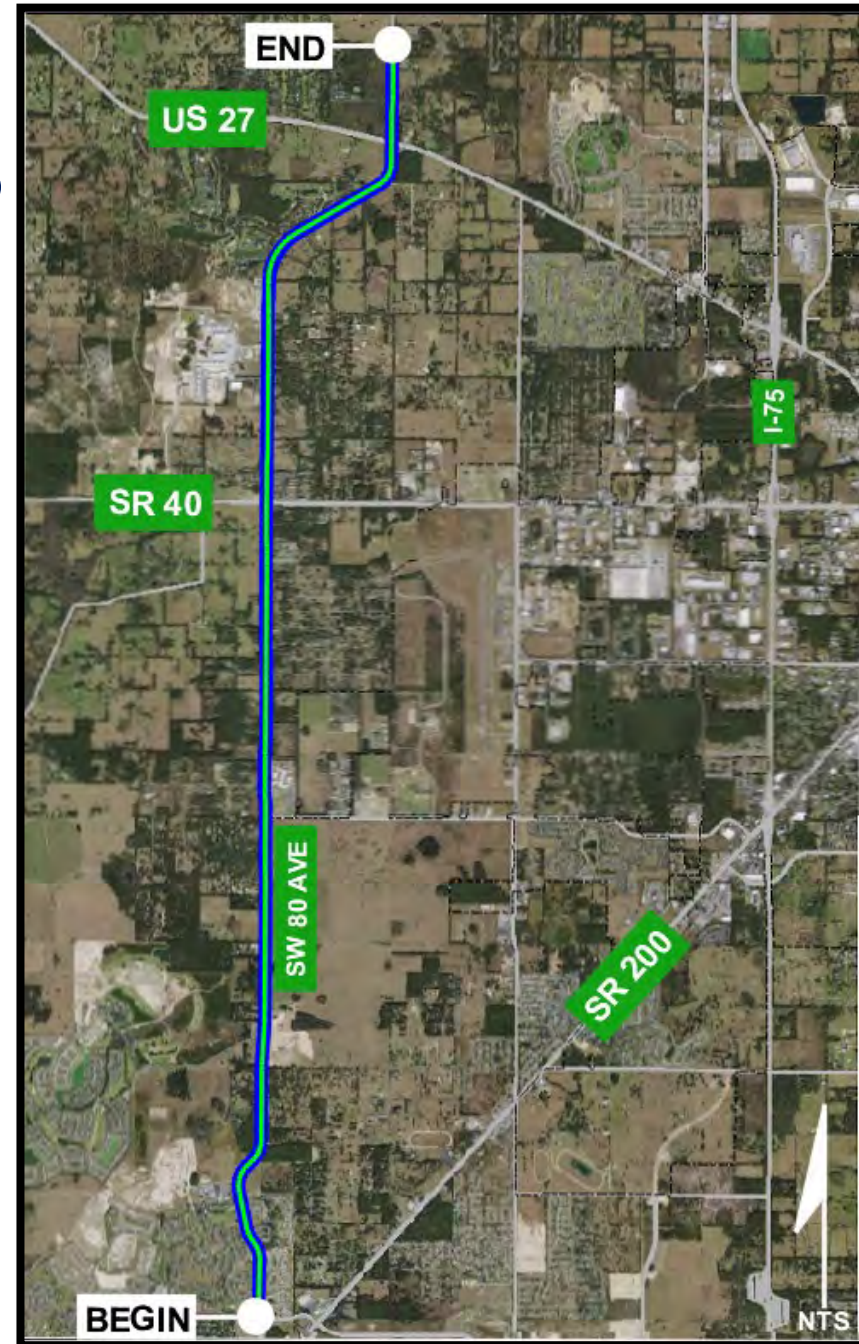
1. Introduction
2. Preliminary Design
3. *Alternate Alignments*
4. Typical Roadway Sections
5. Drainage Retention Areas
6. Timeline
7. Question and Answer

ALTERNATIVE ALIGNMENTS

Highlights

1. Two Primary Alternatives

1. Alternate "A" (Recommended)
2. Alternate "B"

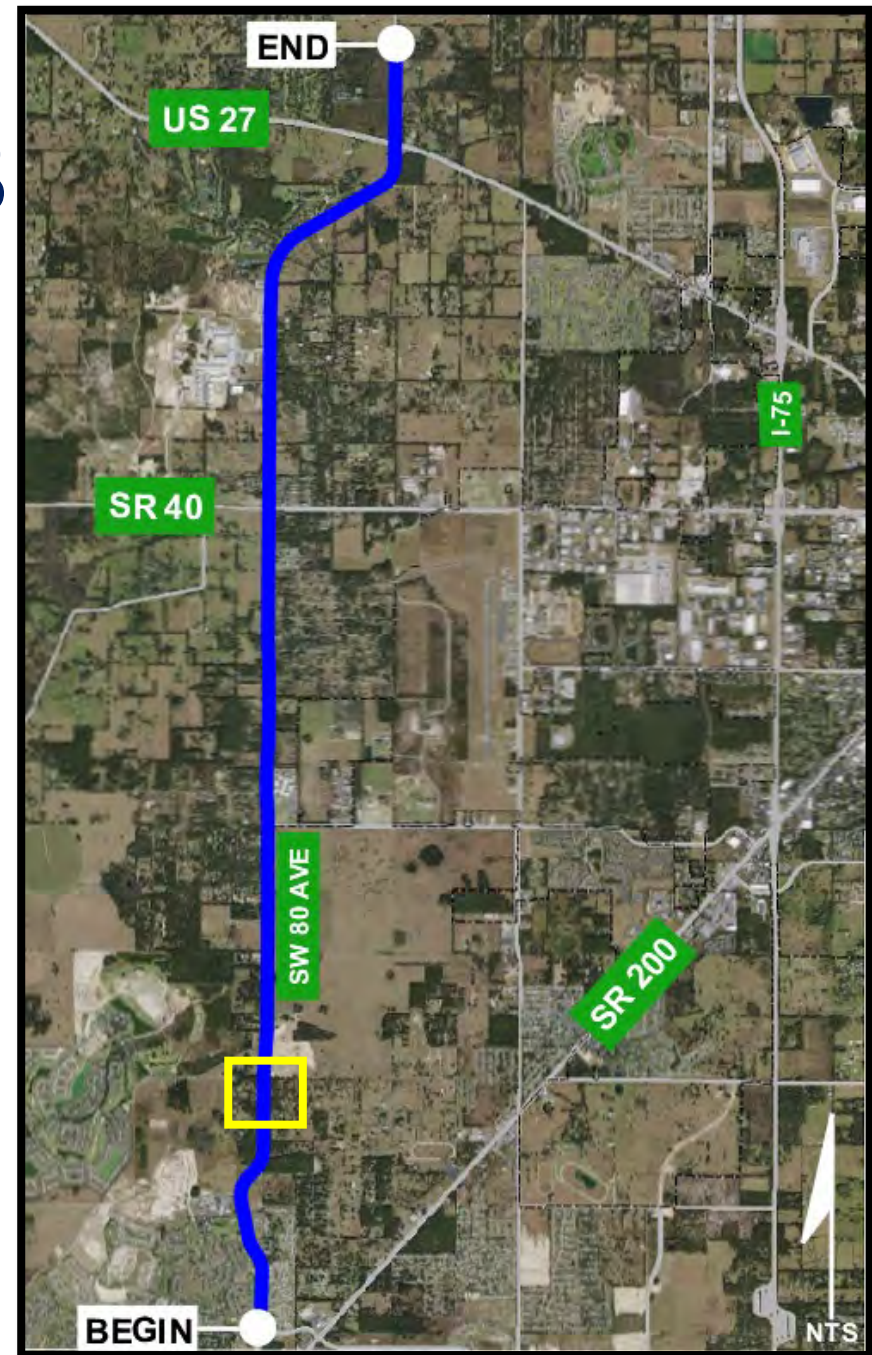


ALTERNATIVE ALIGNMENTS

Highlights

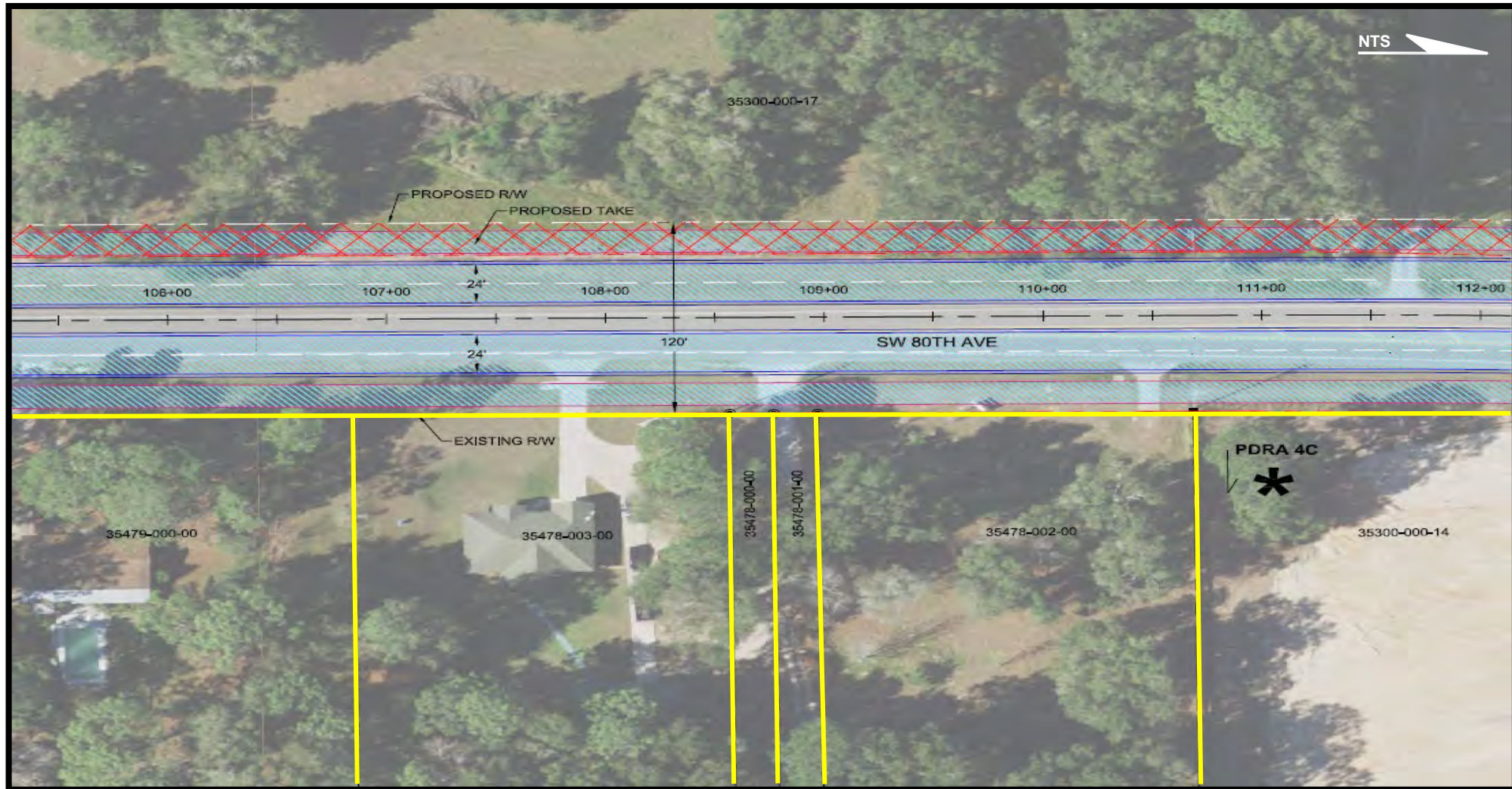
1. Two Primary Alternatives

1. Alternate "A" (Recommended)
2. Alternate "B"



ALTERNATE - "A" (Recommended)

Impacted Properties Shown – 1

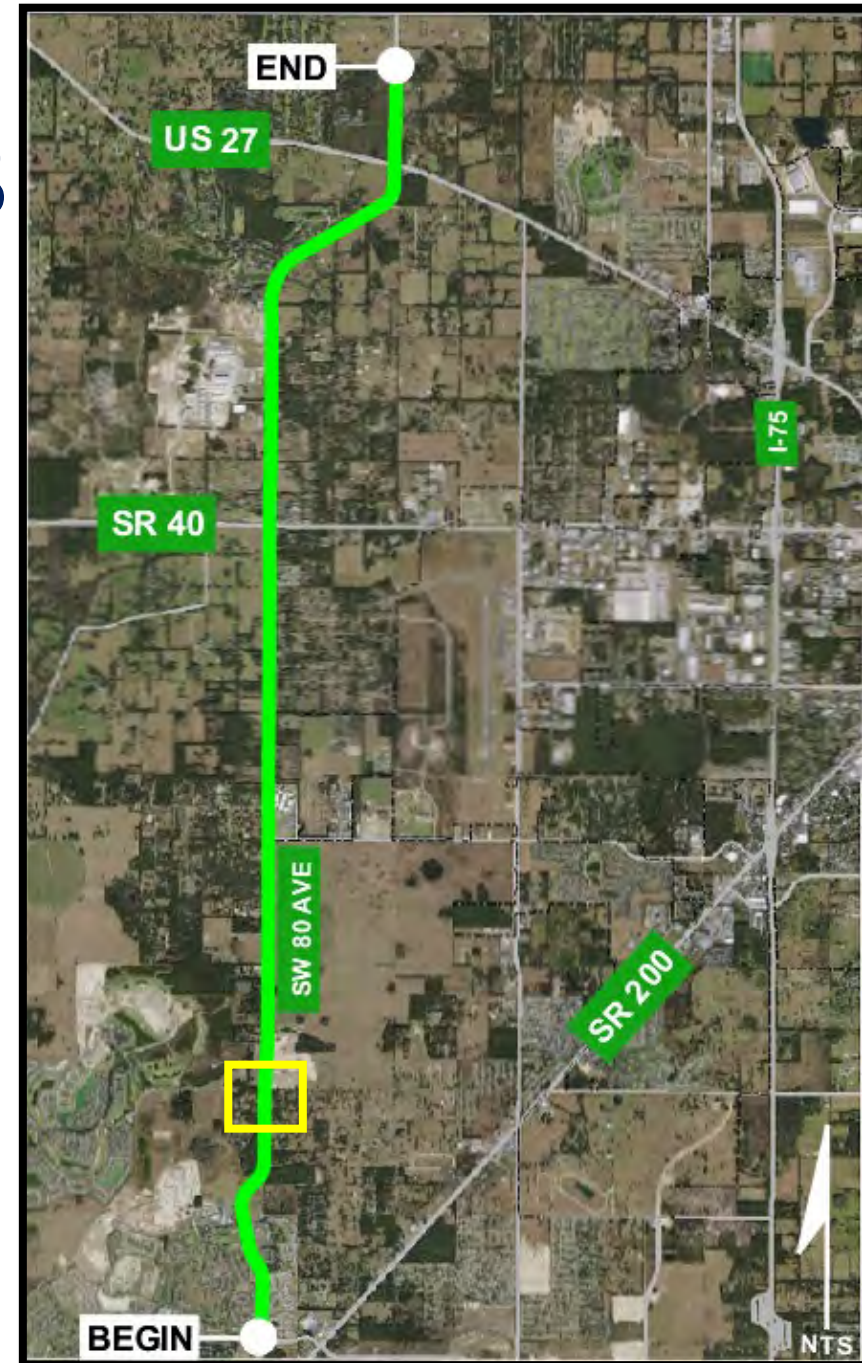


ALTERNATIVE ALIGNMENTS

Highlights

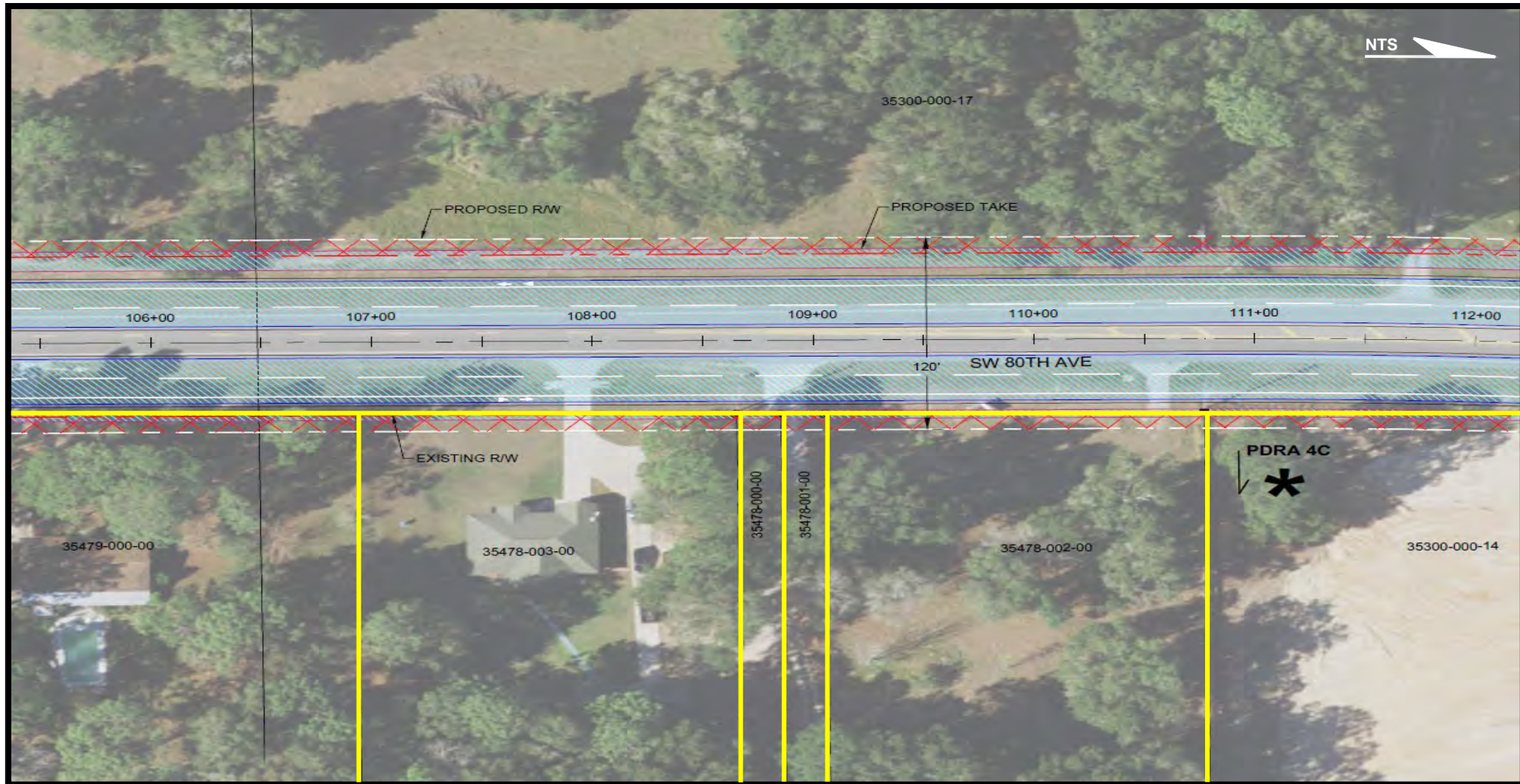
1. Two Primary Alternatives

1. Alternate "A" (Recommended)
2. Alternate "B"



ALTERNATE – “B”

Impacted Properties Shown – 7



ALTERNATIVE ALIGNMENTS

Summary Comparison Table

Area of Study	Impact Potential	Alternate A	Alternate B
Engineering	Existing Drainage & Flood Plain	Moderate	Moderate
	Existing Water & Sewer	Moderate	Moderate
	Existing Electric & Others	Moderate	Moderate
Environmental	Wetlands	Low	Low
	Listed Species	Low	Low
	Contamination	Low	Low
Cultural	Historical Resources	Low	Moderate
	Archeological Sites	Low	Low
Property Impacts	No. of Parcels	+/- 70	+/- 172
	No. of Structures	+/- 13	+/- 20
	Existing Private Improvements	Low	High
	Consistent w/Agreements	Yes	No

AGENDA

1. Introduction
2. Preliminary Design
3. Alternate Alignments
4. Typical Roadway Sections
5. Drainage Retention Areas
6. Timeline
7. Question and Answer

TYPICAL SECTIONS

Existing Section

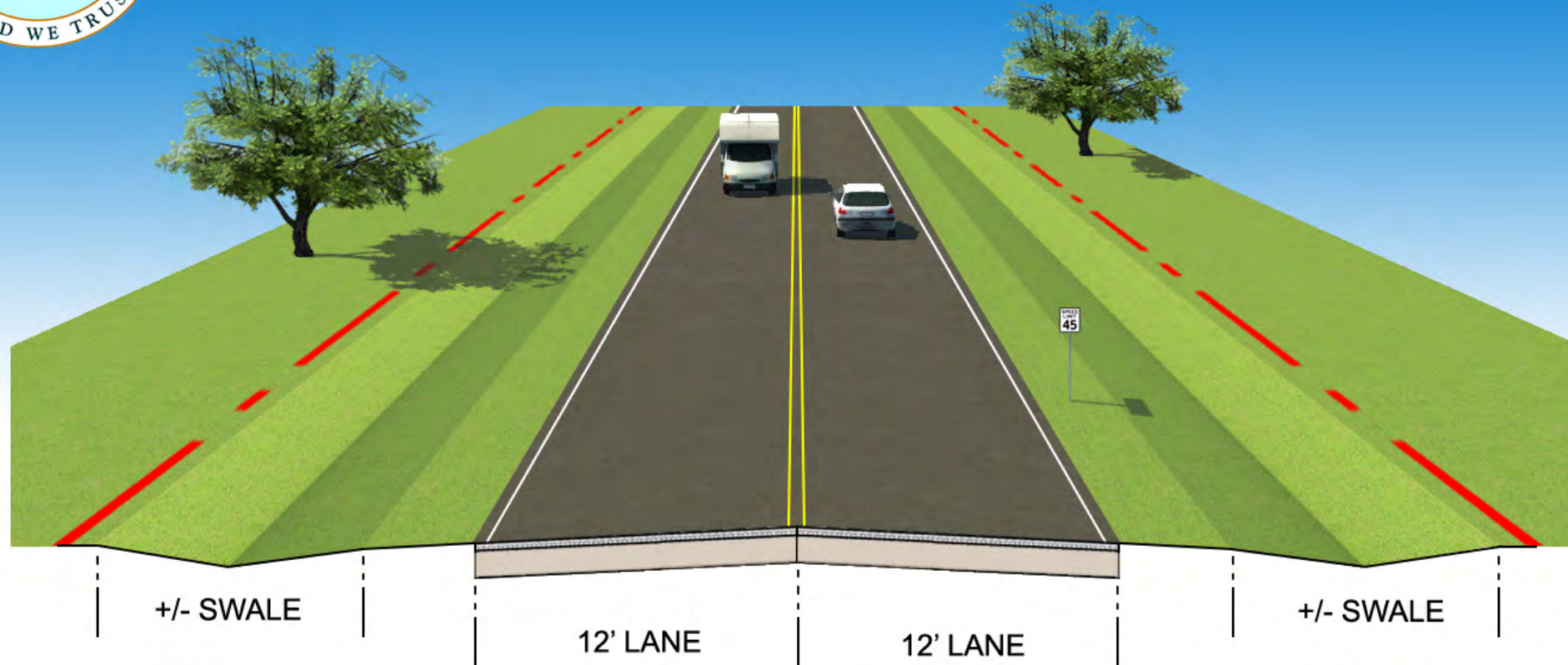
1. Existing +/-60' ROW – Limited

Two Primary

1. Major Typical Section #1 – 120' ROW- Dual Multiuse
2. Major Typical Section #2 – 120' ROW- Multiuse & Sidewalk



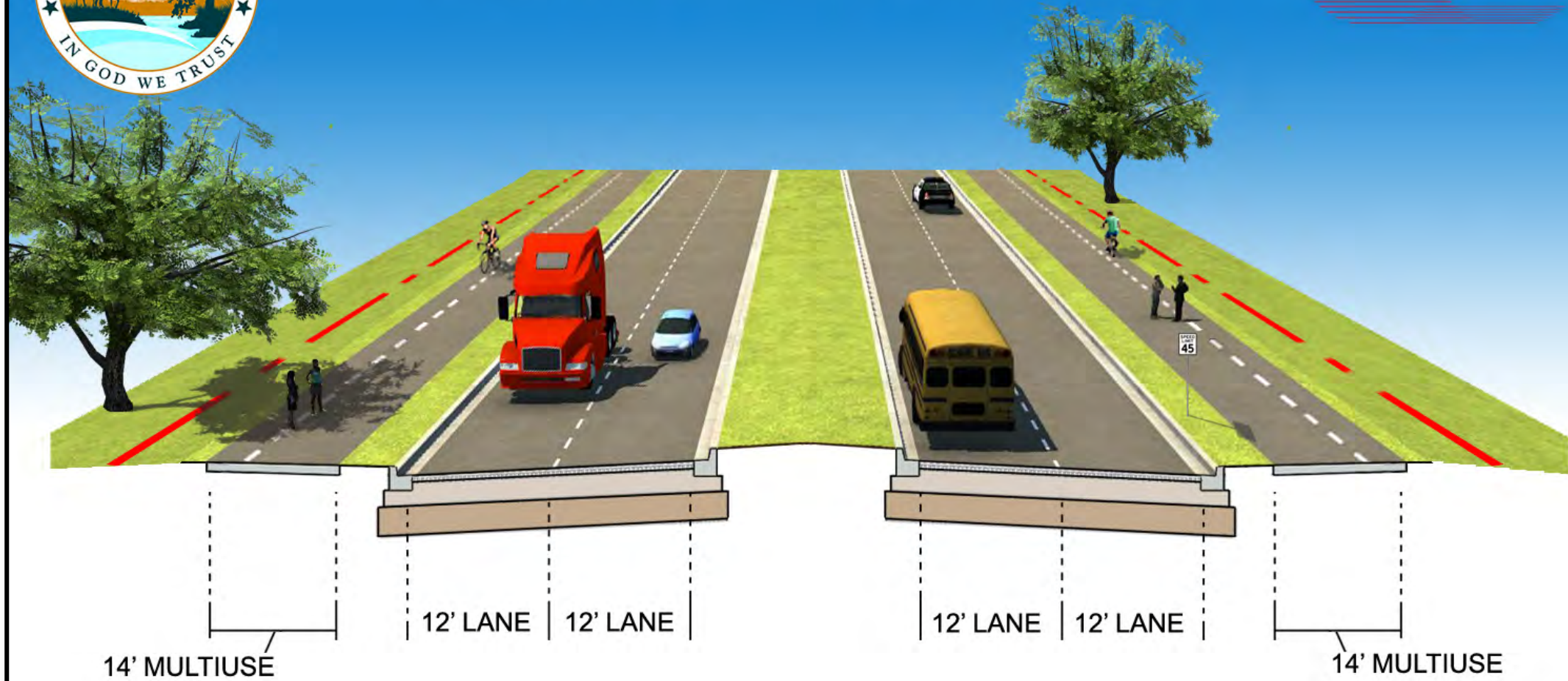
Existing Typical Section - 60' R/W





Major Typical Section #1 - 120' R/W

GDC





Major Typical Section #2 - 120' R/W



12' MULTIUSE

4' BIKE LANE
12' LANE

12' LANE

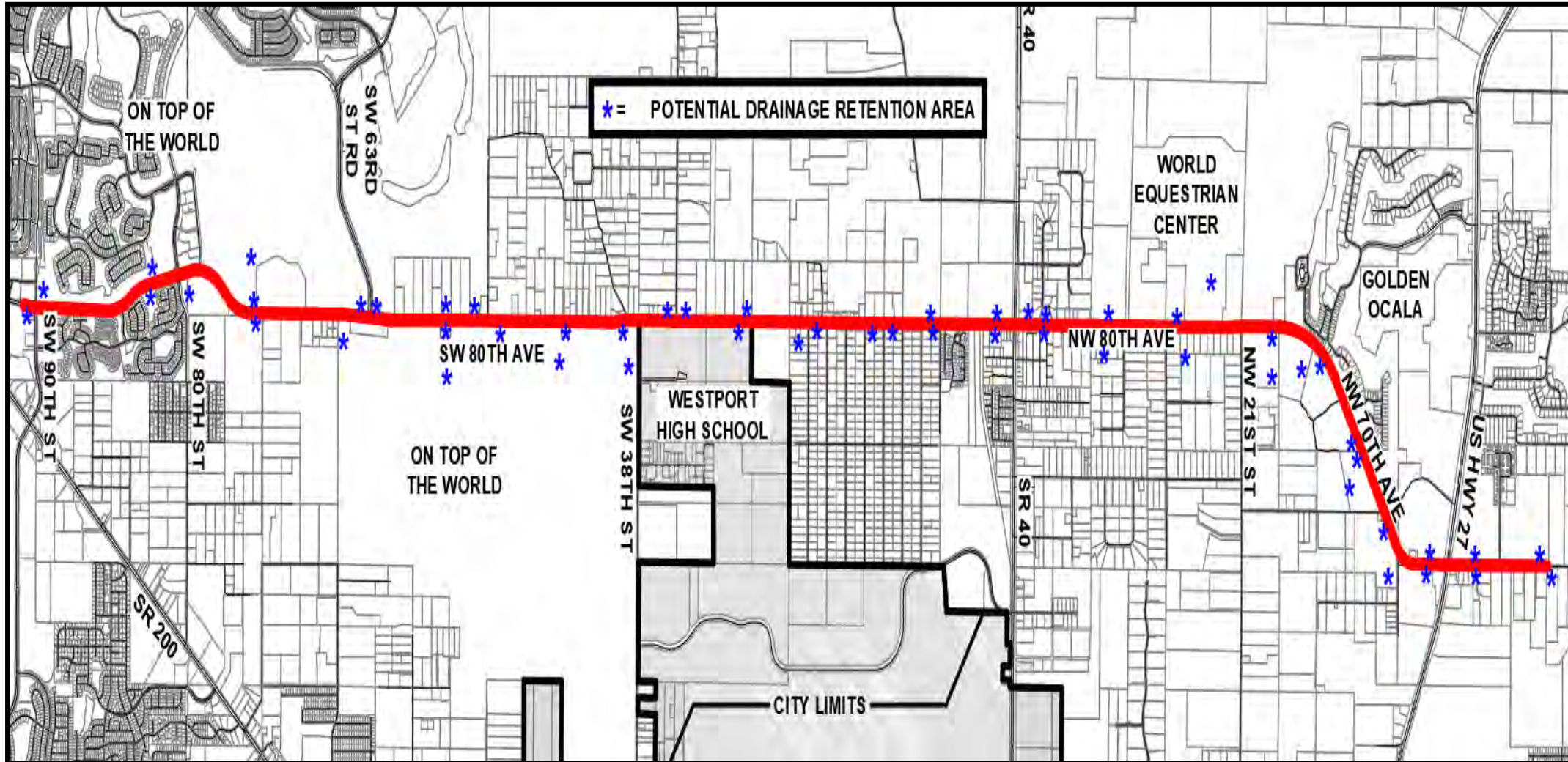
12' LANE
4' BIKE LANE
12' LANE

5' SIDEWALK

AGENDA

1. Introduction
2. Preliminary Design
3. Alternate Alignments
4. Typical Roadway Sections
5. Drainage Retention Areas
6. Timeline
7. Question and Answer

POND SITING REPORT



POND SITING REPORT

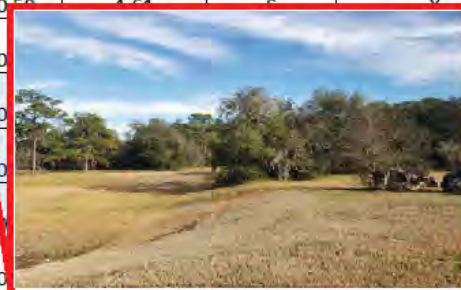
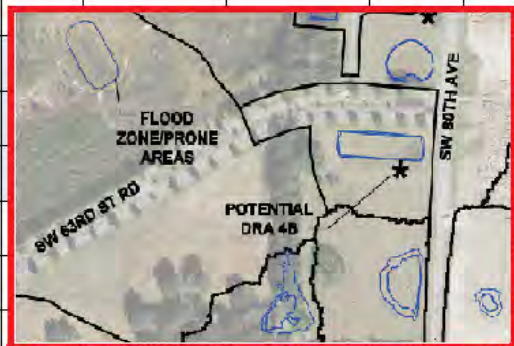


Pond Siting Report
SW/NW 80TH/70TH Avenue PER

3.3 POTENTIAL DRAINAGE RETENTION AREA SUMMARY MATRIX

Basin	PDRA	Existing Land Use (As of 12/2020)	Future Land Use (As of 12/2020)	Zoning	Consistent w/Agreement	Hydro. Soil Group	Flooding Condition	Environmental Impact Potential	Cultural Impact Potential	Ownership Type	Existing Capacity (AF)	DRA ROW Estimated (AC)	Generalized Estimated Cost	Alternative Recommendation
1	1A	Vacant/DRA	Employment Center/Drainage	B-4/A-2	Yes	D	Uncontrolled	Moderate	Low	Shared	0.58	1.64	\$	Y
	1B	Vacant/DRA	Multi-Family/Drainage	PUD	Yes					Shared	0			
2	2A	D			Yes					Shared	0			
	2B	Golf Course			Yes					Shared	0			
	2C (Part)	Vacant			Yes					Shared	0			
3	3A	Vacant			Yes					County	0			
	3B (>>)	Vacant	Drainage	PUD	Yes					Shared	0.00	2.27	\$	
	3C	Vacant	Commercial	PUD	N/A	A	Uncontrolled	Low	Low	County	0			
4	4A	Vacant/DRA	Residential/Drainage	PUD/A-1	Yes	A	Controlled	Low	Low	County	2			
	4B	Vacant/DRA	Drainage	PUD	Yes	A	Controlled	Moderate	Low	Shared	1			
	4C (Part)(>>)	DRA	Residential/Drainage	PUD	Yes	A	Controlled	Low	Low	Shared	0			
5A	5A1	Vacant/DRA	Residential/Drainage	PUD/A-2	Yes	A	Controlled	Low	Low	County	3			
	5A2 (>>)	Vacant	Residential/Drainage	PUD	Yes	A	None	Low	Low	Shared	20.28	3.42	\$	

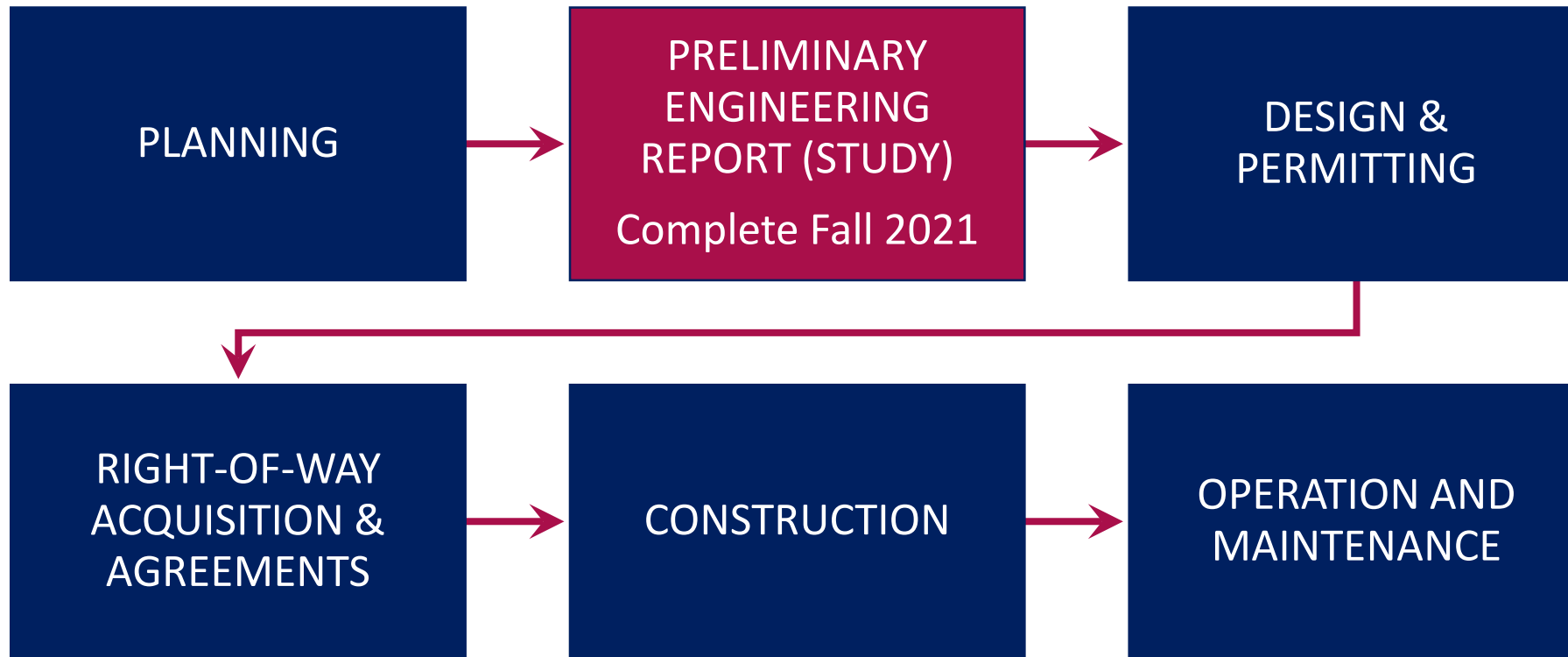
Multiple Potential Drainage Retention Area locations provided per basin.



AGENDA

1. Introduction
2. Preliminary Design
3. Alternate Alignments
4. Typical Sections
5. Pond Siting & Drainage
6. Timeline
7. Question and Answer

TIMELINE



TITLE VI STATEMENT



Policy Statement:

The Marion County Board of County Commissioners values diversity and welcomes input from all interested parties, regardless of cultural identity, background or income level. Moreover, the County does not tolerate discrimination in any of its programs, services or activities. The Marion County Board of County Commissioners will not exclude participation in, deny the benefits of, or subject to discrimination anyone on the grounds of race, color, national origin, sex, age, disability, religion or familial status:

Title VI of the Civil Rights Act of 1964

The Marion County Board of County Commissioners provides equal opportunity in all programs that receive federal assistance. Facilities, programs, and services sponsored by the Marion County Board of County Commissioners are available to all eligible persons regardless of race, color, or national origin.

Título VI de la ley de derechos civiles de 1964

La Junta de Comisionados del Condado de Marion proporciona igualdad de oportunidades en todos los programas que reciben asistencia federal. Las instalaciones, servicios, programas y servicios patrocinados por la Junta de Comisionados del Condado de Marion están disponibles para todas las personas elegibles sin importar raza, color y origen nacional.



Contact Title VI Officer: Amanda Tart
521 SE 26th Court, FL 34474
(352) 438-2345
Amanda.tart@marionfl.org

QUESTIONS AND ANSWERS